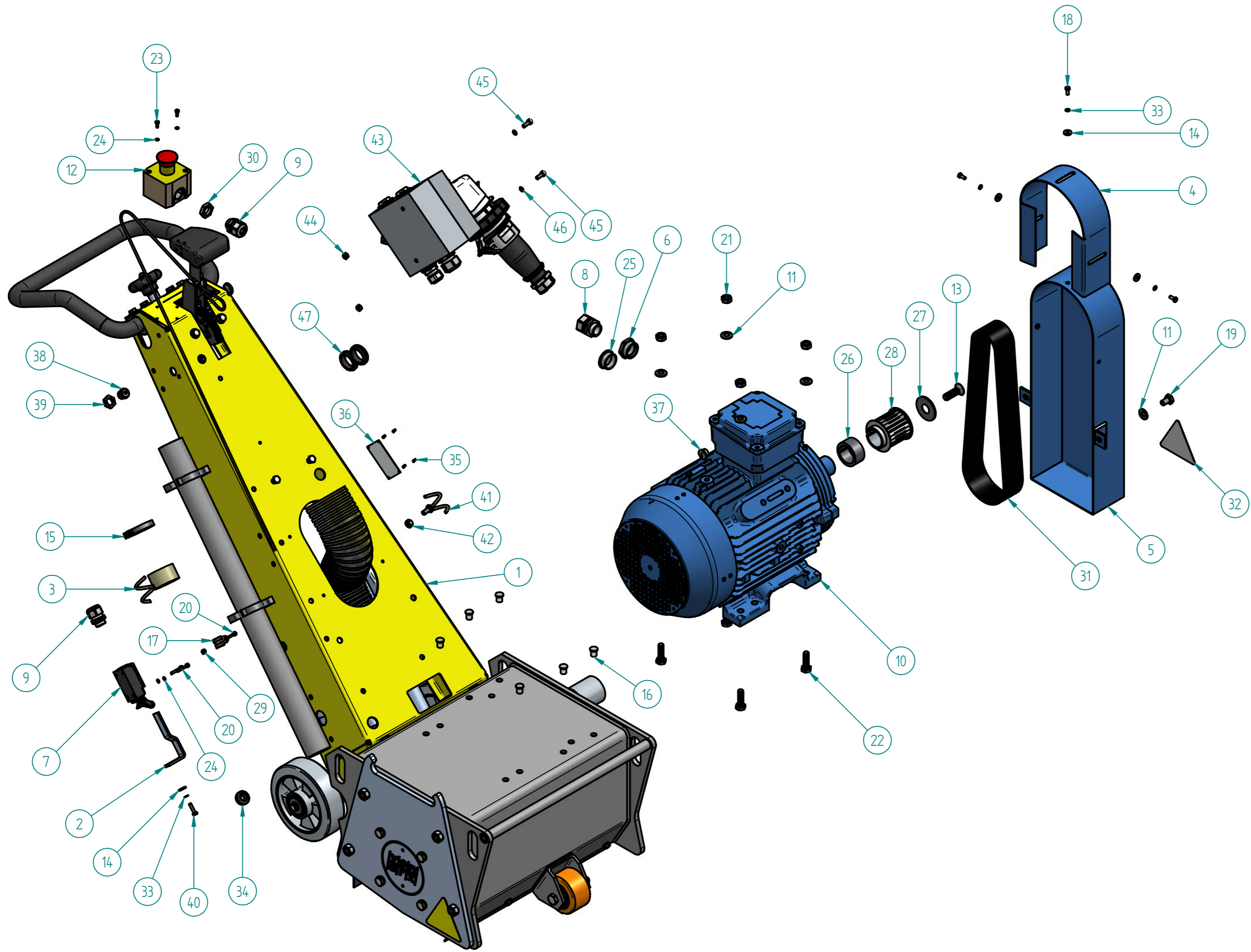


TOLERANCES acc. to ISO / TOLERANSEN entl. ISO
 Applicable where no tolerance is indicated.
 Gültig für Toleranzen bei direkt abgelesen
 For machining / For bearbeitung ISO 2768-mk
 For welding / For schweißen SS-DIN ISO 13920-BF
 Surface finish acc. to ISO 1502 Machine surfaces
 Yläpääntelä enligt ISO 1302. For bearbetade ytor.



Item	Artikelnummer	Document Number	Title	Quantity
1	703001	665.00.00d	VA-30S BASIC DEVICE	1
2	703037	665.09.08a	BEVELLED PROFIL FOR SWITCH	1
3	702748	655.21.09	CABLE GUIDE	1
4	702743	655.21.04d	ADDITIONAL BELT GUARD	1
5	702742	655.21.03b	BELT GUARD	1
6	115095		REDUCTION M32/M25	1
7	114997	791.38.39	POSITION SWITCH	1
8	114814	791.80.52	SCREWED CABLE GLAND M25 PLAST	1
9	114813		SCREWED CABLE GLAND M20 PLAST	2
10	114257	665.21.10	ELECTRIC MOTOR TYP TE 132M	1
11	113919	BN_13292_M10	SAFETY WASHER	6
12	110942	791.80.04	CASING EMERGENCY STOP	1
13	110428	792.61.93	COUNTERSUNK SCREW	1
14	108573	BN_733_M5	WASHER	4
15	108444	792.64.96	CLAMP	1
16	108338	792.64.87	SPECIAL PIN TL-2-207	6
17	702747	655.21.08	PIPE CLAMP WITH PROTECTION	1
18	106374	BN_56_M5x12	HEXAGONAL SCREW	3
19	102289	BN_56_M10x16	HEXAGON HEAD SCREW	2
20	102271	BN_3_M4x25	ALLEN SCREW	3
21	102287	BN_117_M10	HEXAGONAL NUT	4
22	101609	BN_56_M10x35	HEXAGON HEAD SCREW M10x35, DIN 933, FZB	4
23	101590	BN_3_M4x10	ALLEN SCREW	2
24	100615	BN_792_M4	SAFETY WASHER	4
25	100201		BLANK PLUG BLK M32	1
26	703042	665.21.04	DISTANCE SIND SLEEVE	1
27	703041	665.21.03	WASHER	1
28	703040	665.21.02	TOOTHED PULLEY HTD 24-8M-50	1
29	108692	BN_161_M4	SAFETY NUT	1
30	114880		COUNTER NUT M20 PLASTICS	1
31	702401	653.21.03	TOOTHED BELT 920-8MGT3-50	1
32	115650	665.00.05	STICKER "WARNING CUTTER SHAFT"	1
33	102285	BN_792_M5	SAFETY WASHER	4
34	109046	791.46.54	CABLE RETAINER	1
35	108214		POP RIVET TAP/D320	4
36	703559	788.42.31c	TYPE PLATE	1
37	115097		SEALING PLUG M16	1
38	115136		SELF-SEALING GROMMET	1
39	115137		COUNTER NUT M16	1
40	107683	BN_56_M5x20	HEXAGON HEAD SCREW	1
41	707069	665.21.06	CABLE GUIDE	1
42	100263	BN_161_M8	SAFETY NUT	1
43	800011	658.14.00	SWITCH ASSEMBLED VA 30 S 7,5 K	1
44	108693	BN_161_M6	SAFETY NUT	2
45	100301	BN_3_M6x16	HEXAGON SOCKET HEAD CAP SCREW	2
46	100616	BN_792_M6	SAFETY WASHER SCHNORR®	2
47	114666	792.75.97	CABLE GLAND	2
48	111182		STICKER -CAUTION HIGH VOLTAGE-	2
49	700603		TUBE MOLYKOTE BR2 PLUS	0.005
50	703542		ARROW	1
51	109332		CABLE STRAPS	5
52	900042		LOCTITE 243	0.05

Material		Dimension	
Drawn By GS	Date 12/02/2020	Approved Date 24.02.2020	Approved By MS
Units : mm		SIZE A2	
		Description VA-30 S WITH E-Motor 400 V	Article Number 800009
		DWG NO 665.60.00	
Part/Assembly File 6656000.asm		sheet of 1 1	Rev. ①

THE INFORMATION CONTAINED IN THIS DRAWING IS THE SOLE PROPERTY OF VON ARX. EXACT REPRODUCTION IN PART OR WHOLE WITHOUT THE WRITTEN PERMISSION OF VON ARX. EXACT IS PROHIBITED.