



OPERATING INSTRUCTIONS

Dust Extractor

S26

AMPS 19.6 120 VOLT

AMPS 9.8 230 VOLT

CFM 258

| |
|--|
| <p>READ ALL INSTRUCTIONS BEFORE USING</p> |
|--|

Introduction

Dear Customer,

Thank you for choosing Ermator as your supplier.

We hope that the Ermator S26 dust extractor will be to your satisfaction and meet your expectations.

Ermator has been manufacturing professional dust extractors since 1967 and has over the years acquired a genuine technical knowledge in this area. We are continuously striving to improve our products in our product segment and will continue to supply the market with new equipment.

Notice!

These instructions are only for dust extractor type Ermator S26.

The Ermator S26 dust extractor can only be used with dry, non-explosive material.

The Ermator S26 dust extractor has been designed to clean construction areas and be connected to small electrical machines such as drills etc.

Ermator will not be held responsible if the dust extractor is used for other applications or been used in ways other than those outlined in this instruction manual.

Please pay particular attention to the safety regulations.

Read the complete instruction manual before using the Ermator S26.

All spare parts used with the Ermator S26 must be those specified by Ermator.

1. UNPACKING

When unpacking the machine, please check that the following accessories are included:

- The hose with end fittings.
- Handle.
- Floor nozzle.

If any of the above-mentioned parts are missing, please contact your local distributor or our sales representative.

Assemble the front wheels using the using bolt, washer and nut that are included in the package.

2. SAFETY INSTRUCTIONS

Handling

Warning

- Cables damaged through crushing or splitting can be dangerous if used and should be replaced immediately. Risk of personal injury.

Warning

- Do not connect the machine to an unearthed socket. Risk of personal injury.

Warning

- Make sure the assembly area is firm, so the dust extractor does not tip over. Risk of personal and material injury.
-

Warning

- Risk of pinching when handling the toggle fastener.

Warning

- The machine must not be used in environments where explosive gases may be present. Serious risk of explosion.

Service

Warning

- Remove the plug from the wall socket when carrying out maintenance work. Risk of personal injury.

Warning

- Dust can be spread when the coarse filter and the absolute filter are replaced that can be hazardous to health. Accordingly, the user should wear protective glasses, protective gloves, and a breathing mask conforming to protection class FFP3.

Warning

- Do not puncture the absolute filter. Risk of dust dispersion.

3. FUNCTION

The machine is designed for sucking and separating dry, non-combustible dust with an explosion limit value of $>0.1\text{mg/m}^3$.

The motor is started by the switch.

The switch has three positions: **0**: Motor off

1: Motor on

Dust-laden air is then sucked through the inlet valve at high speed via the suction hose. The air is slowed down by the cyclone and coarse dust particles are separated out, partly by centrifugal force and partly by gravity. Air and finer particles then pass through the double filter system where separation is made. The machine is designed for filter cleaning by reverse air pulse.

The separated dust accumulates in the cyclone until the machine is switched off, when it drops through the bottom flap into the plastic bag.

4. USE

Before use, the user must be trained in handling the machine and the hazardous dust.

WARNING

Connect the electric plug to a power outlet with the correct voltage, see the nameplate.

Connect the electric plug to an outlet with the correct voltage (see the designation plate).

The filter must be cleaned from time to time. This must be done before changing the plastic bag and can also be done when the work is complete or when there is poor suction.

Procedure: Cover the inlet, use attached cover, let the machine build up vacuum for a few seconds then quickly push down on the key and release it. Repeat the procedure 4-5 times.

Turn of the motor and wait until it stops completely, then uncover the inlet.

If suction remains poor, the filter should be replaced.

Only use original parts.

5. DUST STORAGE SYSTEM

S36 are equipped with Longopac system for effective dust storage. This is a 20 m long plastic tube that will be divided into plastic bags using the striped attached with the machine. To mount a new Longopac bag:

Release the belt holding the last bag. Remove the holder. Put in a new Longopac bag, pull out the inner end upwards. Mount the holder on to the machine and strap the upwards end with the belt. Pull down to outside end and close it using a stripe.

The machine can be used with original Ermator dust bag for single use.

Only change Longopac or bag after jet pulsing the filter

6. FILTER CHANGE

Risk of dust dispersion - Use of personal safety equipment

Unhealthy dust can be spread during filter change. Accordingly, the user should wear protective glasses, protective gloves, and a breathing mask conforming to protection class FFP3.

WARNING

Main filter

Loosen the 3 clamps and remove the top. Take the bag from the new filter.

Lift out the filter and place it gently in a plastic bag. This bag must be properly disposed.

Insert a new filter.

Only original filters may be used.

Hepa Filter

Loosen the two nuts on the filter cap carefully lift the filter into a clean plastic bag, use the bag from the new filter. This bag must be properly disposed. Insert a new filter in reverse order.

Check the seal when changing filters and change defective seals.

Reload Longopac/change of dust bag

When the Longopac bag is ending do as follow:

Loosen the belt holding the Longopac bag. Start the dust extractor. Remove the final bag and take of the holder. Reload with a new Longopac bag, reassemble the Longopac to the dust extractor and make the first bag. Tighten the belt end then start use the machine or turn it off. Use the same procedure when using single dust bag (optional).

7. SERVICE

WARNING

Before cleaning and servicing the machine, you must switch the machine off and pull out the plug from the outlet.

- When cleaning and servicing the machine, you must switch off the machine and remove the plug from the socket.
- Avoid cleaning with a high pressure cleaner. If necessary, do not direct at the openings on the machine, especially the opening for cooling air.
- Before moving the machine from the work area, the machine must be cleaned.
- All other equipment must be regarded as contaminated and be treated thereafter.
- If possible, use a special suitable room.
- Proper personnel protective equipment must be used.
- All parts which are contaminated after service must be properly disposed of in plastic bags according to all regulations.
- If the machine has to be used for other purposes, it is extremely important that the machine is cleaned, to avoid the spread of hazardous dust.

Accessories

| Part.no. | Description | No./machine |
|-----------|------------------------|-------------|
| 1376013 | Longopac (4-pcs) | 1 pcs |
| 1276008 | Bag (25-pcs), optional | 1 pcs |
| 200900050 | Main filter | 1 pcs |
| 200700070 | HEPA 13 filter | 2 pcs |

For other spare parts, see the enclosed spare parts list.

8.WARRANTY

All Ermator devices and accessories have a 12-month factory warranty for material and manufacturing defects. The warranty extends to 36 months when returning the attached warranty slip. Do not attempt to repair the suction apparatus without the consent of the manufacturer.

The warranty does not cover defects which are the result of normal wear and tear, negligence, defective use, unauthorised repair or the suction apparatus being connected to the incorrect voltage. In the event of any complaint, the suction apparatus or an agreed part of it must be returned to us or our authorised representative for warranty examination and for any warranty repair or replacement.

9. PROBLEM SOLVING

The S26 is designed and manufactured for a severe environment and tasks, but the user must note that the machine must be protected from knocks and blows. Filter, seals, attachments, and connections are carefully adapted and selected with regard to the operator's work environment. Therefore, the operator and service personnel must treat the machine with care in order to work correctly for many years.

| Problem | Cause | Procedure |
|--|--|---|
| Motor does not start | No power Cable defective Switch defective | Connect the machine Change Change |
| Motor stops immediately after starting | Wrong fuse | Connect to correct fuse |
| Motor runs but there is no suction | Hose not connected Hose blocked No Longopac bag | Connect hose Clean hose Fit Longopac bag |
| Motor runs but suction Poor | Hole in the hose Filter blocked Top cover loose Sealing defective | Change hose Change filter Adjust Change current seal |
| Dust blows from motor | Filter loose or defective | Adjust or change |
| Abnormal noise | | Order service |

SAVE THESE INSTRUCTIONS!

TECHNICAL DATA

| S26 (S26/120V) | |
|---------------------------------|--|
| VOLTAGE | 230 VAC, 1-phase (120VAC, 1-phase) |
| POWER | 2x1200 W max (2x1200W) |
| MAX AIRFLOW | 400 m ³ /h 158 cfm |
| MAX VACUUM | 22 kPa 26 kPa |
| HOSE | 7,5m x Ø 50mm 25'x Ø 2" |
| INLET | Ø 63mm Ø 2,5" |
| MAIN FILTER | >99.5% |
| Filter surface | 3 m ² /33,2ft ² |
| HEPA 13 FILTER | >99.95% 2st |
| Filter surface | 2x 1.2m ² /(2x 13,32ft ²) |
| SOUND LEVEL | 70 dB(A) |
| DUST STORAGE SYSTEM | Longopac |
| Size | (440x600 mm) |
| DIMENSIONS LxWxH | 756x546x11275 mm |
| WEIGHT | 103 lbs 47 kg |
| | |

**OM ÖVERENSSTÄMMELSE DECLARATION OF
CONFORMITY
DECLARATION DE CONFORMITÉ
ERKLÄRUNG DER ÜBERSTIMMUNG
SAMSVARSERKLÆRING**

**Pullman Ermator AB
Industrivägen 10
S-777 34 SMEDJEBACKEN**

*Försäkrar under eget ansvar att maskinen
Declare under our sole responsibility that the machine
Certifie sous sa propre responsabilité que le produit ciaprès
Versichern auf eigener verantwortung, dass das Produkt
Forsikrer under eget ansvar at maskinen*

**S26 230V
S26 120V**

**No: 0900256b0001-xxxx
No: 0900256a0001-xxxx**

Tillv.år/Manufact.year/Baujahr: 2010-

*som omfattas av denna försäkring är i överensstämmelse med standarder:
included in this declaration, follows the provisions of the:
est conforme aux aux normes suivantes:
den folgenden Normen entspricht:
er i overensstemmelse med standarder:*

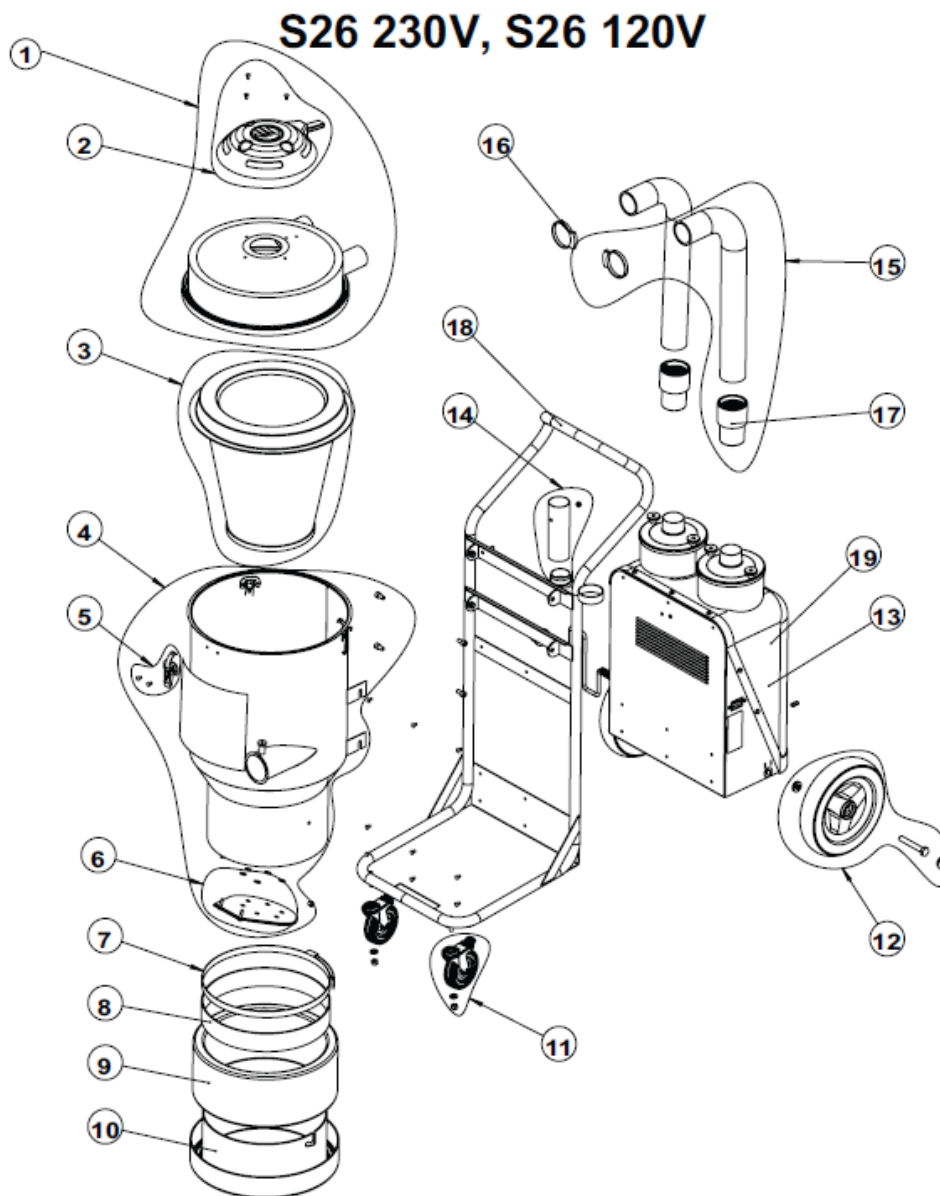
**SS-EN 292-1, SS-EN 60 204-1 (1993.11.30)
SS-EN 55011:1989
SS-EN 50082-1
SS-EN 60335-1, SS-EN 60335-2-69 & A1**

enligt villkoren i/according to/selon/aut/i henhold til vilkårene i
**Machine Directive 98/37/EEG
Low Voltage Directive 73/23/EEG
EMC Directive 89/336/EEG**

SMEDJEBACKEN 2010.01.01

**Torbjörn Bengtsson
VD
General Manager**

S26 230 V, S26 120V



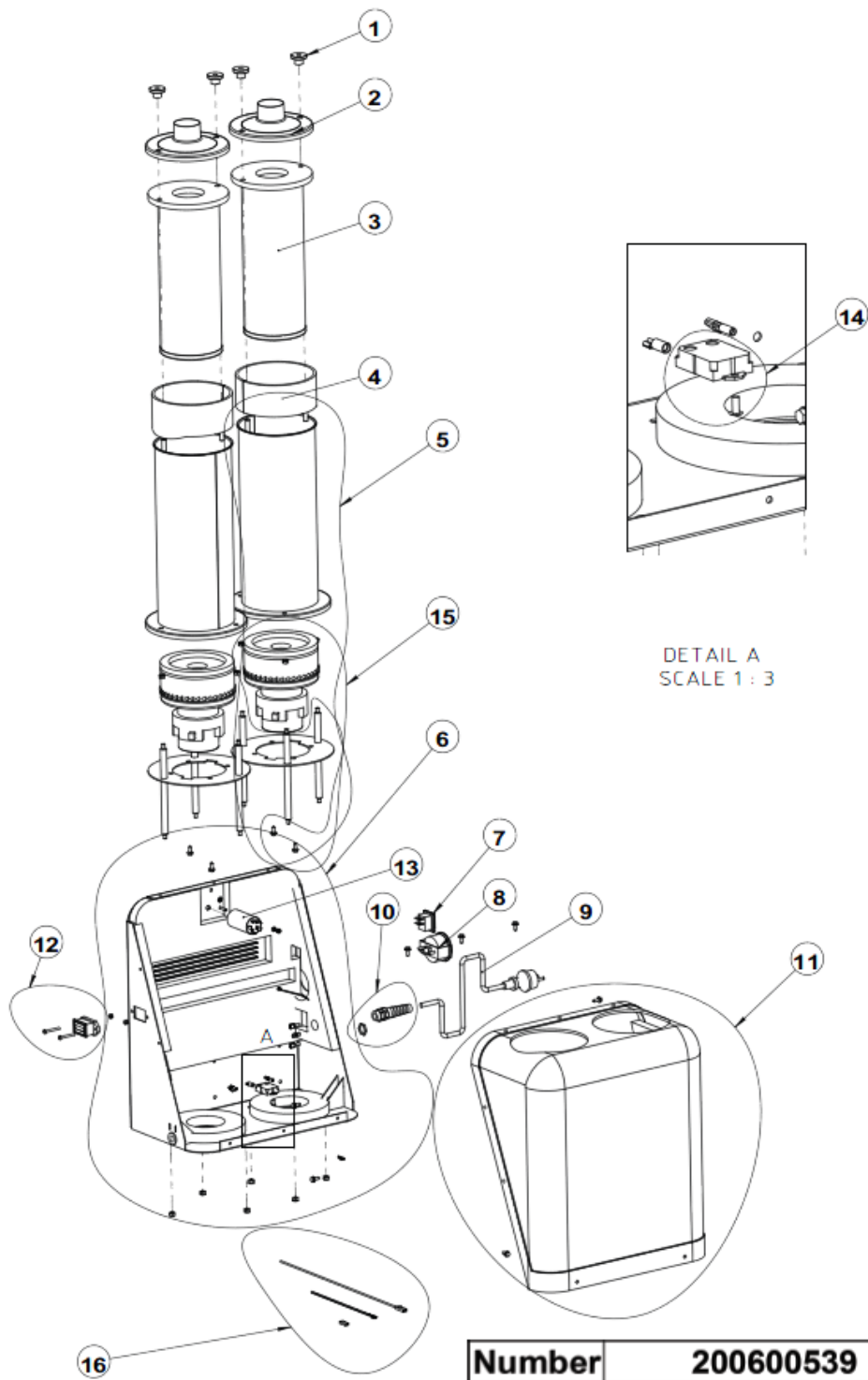
| | | |
|--------|-----------|------------|
| Number | 200900256 | 200900256a |
| Model | S26/230v | S26/120v |
| Rev. | 01 | 01 |

S26 230 V, S26 120V

| POS. | QTY. | NUMBER | DESCRIPTION | |
|------|------|------------|------------------------------|--|
| 1 | 1 | 201000143 | TOP COVER ASSEMBLY (ex. S26) | |
| 2 | 1 | 201000118 | CLEANING UNIT KIT | |
| 3 | 1 | 200900050 | MAIN FILTER (ex. S26) | |
| 4 | 1 | 201000129a | TANK COMPLETE (ex. S26 US) | |
| 5 | 3 | 200600799 | HOLDER KIT | |
| 6 | 1 | 201000116 | FLAP KIT | |
| 7 | 1 | 1371001 | BELT | |
| 8 | 1 | 1351145 | ANTI-SKID | |
| 9 | 1 | 1376013 | LONGOPAC bag | |
| 10 | 1 | 200600536a | LONGOPAC HOLDER | |
| 11 | 2 | 200800152 | FRONT WHEEL KIT | |
| 12 | 2 | 200800151 | REAR WHEEL KIT | |
| 13 | 1 | 201000130 | ENGINE PACKAGE 230 V | |
| 14 | 1 | 201000122 | CLIP HOLDER KIT | |
| 15 | 2 | 201000123 | HOSE KIT (ex. S13) | |
| 16 | 2 | 200800158 | HOSE CLAMP PLASTIC 60-65 mm | |
| 17 | 2 | 1335011 | HOSE END | |
| 18 | 1 | 201000131 | WAGON COMPLETE (ex. S26) | |
| 19 | 1 | 201000130a | ENGINE PACKAGE 120 V | |

| | | |
|--------|-----------|------------|
| Number | 200900256 | 200900256a |
| Model | S26/230V | S26/120V |
| Rev. | 01 | 01 |

ENGINE PACKAGE 230 V



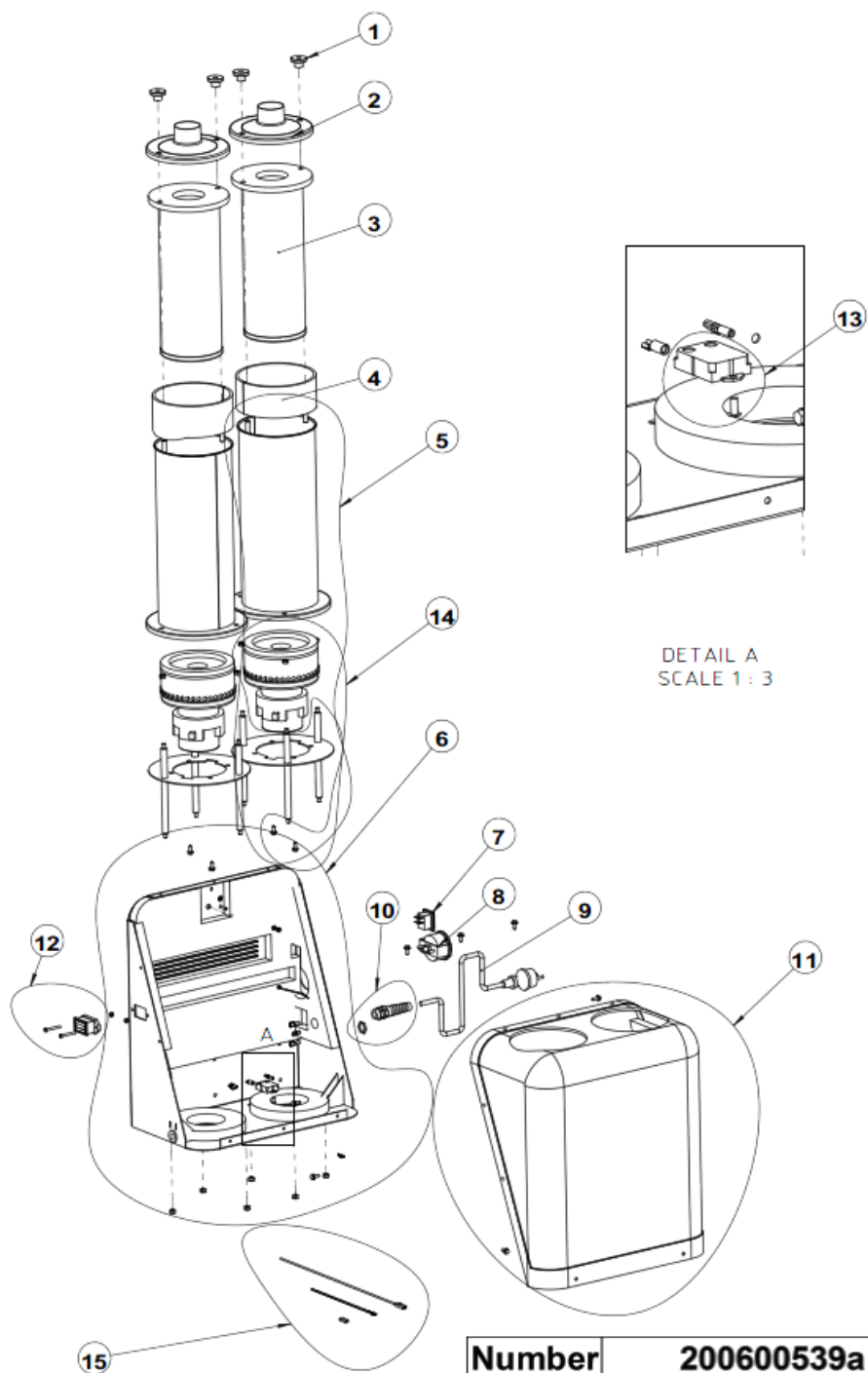
| | |
|--------|------------------|
| Number | 200600539 |
| Model | Engine Pack 230V |
| Rev. | 01 |

ENGINE PACKAGE 230 V

| Pos. | QTY. | NUMBER | DESCRIPTION |
|-------------|-------------|-------------------|-----------------------------|
| 1 | 4 | 200700289 | LETTER NUT |
| 2 | 2 | 200700147 | COVER |
| 3 | 2 | 200700070 | FILTER |
| 4 | 2 | 200600080 | SEALING |
| 5 | 2 | 200600084g | ENGINE TUBE 230V |
| 6 | 1 | 201000135 | CHASSIS KIT |
| 7 | 1 | 10423 | SWITCH |
| 8 | 1 | 200700413 | MANOMETER, KIT |
| 9 | 1 | 1361023 | CORD SET |
| 10 | 1 | 1362123 | CABLE FIX (PG11) |
| 11 | 1 | 200600805 | ENGINE COVER, KIT |
| 12 | 1 | 201000133 | COUNTER, KIT |
| 13 | 1 | 1362165 | ELECTRICAL FILTER |
| 14 | 1 | 200700410 | SOFT START 230V, KIT |
| 15 | 2 | 200700385 | ENGINE 1200W 230V |
| 16 | 1 | 200700397 | CABLE KIT 230V |

| | |
|---------------|-------------------------|
| Number | 200600539 |
| Model | Engine Pack 230v |
| Rev. | 01 |

ENGINE PACKAGE 120 V



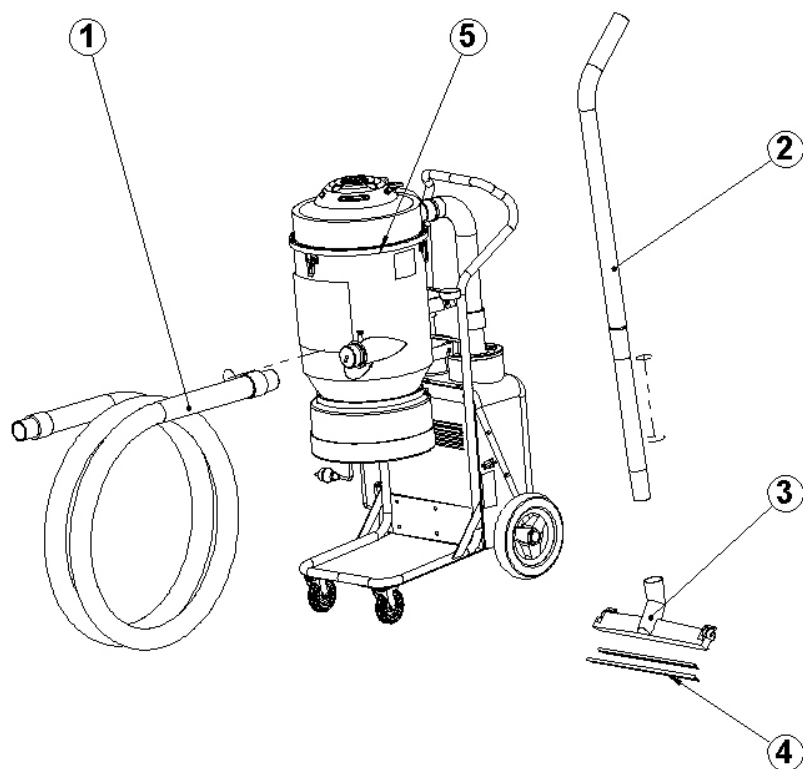
| | |
|--------|------------------|
| Number | 200600539a |
| Model | Engine Pack 120V |
| Rev. | 01 |

ENGINE PACKAGE 120 V

| Pos. | QTY. | NUMBER | DESCRIPTION |
|------|------|------------|----------------------|
| 1 | 4 | 200700289 | LETTER NUT |
| 2 | 2 | 200700147 | COVER |
| 3 | 2 | 200700070 | FILTER |
| 4 | 2 | 200600080 | SEALING |
| 5 | 2 | 200600084h | ENGINE TUBE 230V |
| 6 | 1 | 201000135 | CHASSIS KIT |
| 7 | 1 | 10423 | SWITCH |
| 8 | 1 | 200700413 | MANOMETER, KIT |
| 9 | 1 | 1361025 | CORD SET |
| 10 | 1 | 1362184 | CABLE FIX (PG13,5) |
| 11 | 1 | 200600805 | ENGINE COVER, KIT |
| 12 | 1 | 201000133 | COUNTER, KIT |
| 13 | 1 | 200700531 | SOFT START 120V, KIT |
| 14 | 2 | 200700168 | ENGINE 1200W 120V |
| 15 | 1 | 200700397a | CABLE KIT 120V |

| | |
|--------|------------------|
| Number | 200600539a |
| Model | Engine Pack 120V |
| Rev. | 01 |

ACCESSORIES S26 230 V, S26 120 V



| POS. | QTY | NUMBER | DESCRIPTION | |
|------|-----|-----------|------------------------------|--|
| 1 | 1 | 201000061 | HOSE 51mm x 7,5m (ex. S26) | |
| 2 | 1 | 1224035 | 50S STEEL TUBE KIT | |
| 3 | 1 | 1326087 | S450 FLOOR TOOL 50mm x 450mm | |
| 4 | 1 | 1340005 | AG46A BRUSHES (L=400/445) | |
| 5 | 1 | N/A | | |

Notes

[illegible]

