



## **OPERATING INSTRUCTIONS**

**Dust Extractor**

# **S36 120 V**

|  |
|--|
| <p><b>READ ALL INSTRUCTIONS BEFORE<br/>USING</b></p> |
|--|



# Introduction

Dear Customer,

Thank you for choosing Ermator as your supplier.

We hope that the ErmatorS36 dust extractor will be to your satisfaction and meet your expectations.

Ermator has been manufacturing professional dust extractors since 1966 and has over the years acquired a genuine technical knowledge in this area. We are continuously striving to improve our products in our product segment and will continue to supply the market with new equipment.

## Notice!

**These instructions are only for dust extractor type ErmatorS36.**

**The ErmatorS36 dust extractor can only be used with dry, non-explosive material.**

**The ErmatorS36 dust extractor has been designed to clean construction areas and be connected to small electrical machines such as drills etc.**

**Ermator will not be held responsible if the dust extractor is used for other applications or been used in ways other than those outlined in this instruction manual.**

**Please pay particular attention to the safety regulations.**

**Read the complete instruction manual before using the ErmatorS36.**

**All spare parts used with the ErmatorS36 must be those specified by Ermator.**

## 1. UNPACKING

When unpacking the machine, please check that the following accessories are included:

- The hose with end fittings.
- Handle.
- Floor nozzle.

If any of the above-mentioned parts are missing, please contact your local distributor or our sales representative.

Assemble the front wheels using the using bolt, washer and nut that are included in the package.

## 2. SAFTY INSTRUCTIONS

### Handling

#### Warning

- Cables damaged through crushing or splitting can be dangerous if used and should be replaced immediately. Risk of personal injury.

#### Warning

- Do not connect the machine to an unearthed socket. Risk of personal injury.

#### Warning

- Make sure the assembly area is firm, so the dust extractor does not tip over. Risk of personal and material injury.
- 

#### Warning

- Risk of pinching when handling the toggle fastener.

#### Warning

- The machine must not be used in environments where explosive gases may be present. Serious risk of explosion.

### Service

#### Warning

- Remove the plug from the wall socket when carrying out maintenance work. Risk of personal injury.

#### Warning

- Dust can be spread when the coarse filter and the absolute filter are replaced that can be hazardous to health. Accordingly, the user should wear protective glasses, protective gloves, and a breathing mask conforming to protection class FFP3.

#### Warning

- Do not puncture the absolute filter. Risk of dust dispersion.

### 3. FUNKTION

**The machine is designed for sucking and separating dry, non-combustible dust with an explosion limit value of  $>0.1\text{mg/m}^3$ .**

The motor is started by the switch.

The switch has two positions: **0**: Motor off

**1**: Motor on

Dust-laden air is then sucked through the inlet valve at high speed via the suction hose. The air is slowed down by the cyclone and coarse dust particles are separated out, partly by centrifugal force and partly by gravity. Air and finer particles then pass through the double filter system where separation is made. The machine is designed for filter cleaning by reverse air pulse.

The separated dust accumulates in the cyclone until the machine is switched off, when it drops through the bottom flap into the plastic bag.

### 4. USE

**Before use, the user must be trained in handling the machine and the hazardous dust.**

#### WARNING

**Connect the electric plug to a power outlet with the correct voltage, see the nameplate.**

Connect the electric plug to an outlet with the correct voltage (see the designation plate).

The filter must be cleaned from time to time. This must be done before changing the plastic bag and can also be done when the work is complete or when there is poor suction.

**Procedure:** Cover the inlet, use attached cover, let the machine build up vacuum for a few seconds then quickly push down on the key and release it. Repeat the procedure 4-5 times.

**Turn of the motor and wait until it stops completely, then uncover the inlet.**

If suction remains poor, the filter should be replaced.

Only use original parts.

### 5. DUST STORAGE SYSTEM

S36 are equipped with a Longopac system for effective dust storage. This is a 20 m long plastic tube that will be divided into plastic bags using the striped attached with the machine.

To mount a new Longopac bag:

Release the belt holding the last bag. Remove the holder. Put in a new Longopac bag, pull out the inner end upwards. Mount the holder on to the machine and strap the upwards end with the belt. Pull down to outside end and close it using a stripe.

The machine can be used with original Ermatordust bag for single use.

Only change Longopac or bag after jet pulsing the filter

### 6. FILTER CHANGE

**Risk of dust dispersion - Use of personal safety equipment**

Unhealthy dust can be spread during filter change. Accordingly, the user should wear protective glasses, protective gloves, and a breathing mask conforming to protection class FFP3.

#### WARNING

**Switch off the machine and pull the plug out of the socket.**

### **Main filter**

Loosen the 3 clamps and remove the top. Take the bag from the new filter.

Lift out the filter and place it gently in a plastic bag. This bag must be properly disposed.

Insert a new filter.

Only original filters may be used.

### **HEPA Filter**

Loosen the two nuts on the filter cap carefully lift the filter into a clean plastic bag, use the bag from the new filter. This bag must be properly disposed. Insert a new filter in reverse order.

Check the seal when changing filters and change defective seals.

## **7. SERVICE**

### **WARNING**

**Before cleaning and servicing the machine, you must switch the machine off and pull out the plug from the outlet.**

- When cleaning and servicing the machine, you must switch off the machine and remove the plug from the socket.
- Avoid cleaning with a high pressure cleaner. If necessary, do not direct at the openings on the machine, especially the opening for cooling air.
- Before moving the machine from the work area, the machine must be cleaned.
- All other equipment must be regarded as contaminated and be treated thereafter.
- If possible, use a special suitable room.
- Proper personnel protective equipment must be used.
- All parts which are contaminated after service must be properly disposed of in plastic bags according to all regulations.
- If the machine has to be used for other purposes, it is extremely important that the machine is cleaned, to avoid the spread of hazardous dust.

### **Accessories**

| <b>Part.no.</b> | <b>Description</b>      | <b>No./machine</b> |
|-----------------|-------------------------|--------------------|
| 1376013         | Longopac (4-pcs)        | 1 ea               |
| 1276008         | Bag (25-pcs) (optional) | 1 ea               |
| 200900051       | Main filter             | 1 ea               |
| 200700070a      | HEPA 13 filter          | 3ea                |

For other spare parts, see the enclosed spare parts list.

## 8. WARRANTY

All Ermator devices and accessories have a 12-month factory warranty for material and manufacturing defects. The warranty extends to 36 months when returning the attached warranty slip. Do not attempt to repair the suction apparatus without the consent of the manufacturer.

The warranty does not cover defects which are the result of normal wear and tear, negligence, defective use, unauthorised repair or the suction apparatus being connected to the incorrect voltage. In the event of any complaint, the suction apparatus or an agreed part of it must be returned to us or our authorised representative for warranty examination and for any warranty repair or replacement.

## 9. PROBLEM SOLVING

The S36 is designed and manufactured for severe environments and tasks, but the user must note that the machine must be protected from knocks and blows. Filter, seals, attachments, and connections are carefully adapted and selected with regard to the operator's work environment. Therefore, the operator and service personnel must treat the machine with care in order to work correctly for many years.

| Problem                                | Cause                     | Procedure               |
|--|---------------------------|-------------------------|
| Motor does not start                   | No power                  | Connect the machine     |
|  | Cable defective           | Change                  |
|  | Switch defective          | Change                  |
| Motor stops immediately after starting | Wrong fuse                | Connect to correct fuse |
| Motor runs but there is no suction     | Hose not connected        | Connect hose            |
|  | Hose blocked              | Clean hose              |
|  | No Longopac bag           | Fit Longopac bag        |
| Motor runs but suction poor            | Hole in the hose          | Change hose             |
|  | Filter blocked            | Change filter           |
|  | Top cover loose           | Adjust                  |
|  | Sealing defective         | Change current seal     |
| Dust blows from motor                  | Filter loose or defective | Adjust or change        |
| Abnormal noise                         |                           | Order service           |

**SAVE THESE INSTRUCTIONS!**

## TECHNICAL DATA

| S36 120V            |   |
|---------------------|---|
| VOLTAGE             | 120 VAC, 1-phase  |
| POWER               | 3x800 W max   |
| MAX AIRFLOW         | 475 m <sup>3</sup> /h<br>280cfm                             |
| MAX VACUUM          | 21kPa   |
| HOSE                | 10m x Ø63mm    7,5 m x Ø 50 mm<br>33"x Ø2,5"    25"x Ø 2,5" |
| INLET               | Ø63mm<br>Ø 2,5"   |
| MAIN FILTER         | >99.5%<br>4,5m <sup>2</sup> /49,8ft <sup>2</sup>            |
| HEPA 13 FILTER      | >99.95% 3st<br>3x1.2m <sup>2</sup> /3x13,32ft <sup>2</sup>  |
| SOUND LEVEL         | 70 dB(A)  |
| DUST STORAGE SYSTEM | Longopac system<br>(440x600 mm)                             |
| DIMENSIONS          | LxWxH840x620x1500 mm  |
| WEIGHT              | 66 kg<br>145 lbs  |



**OM ÖVERENSSTÄMMELSE DECLARATION OF  
CONFORMITY  
DECLARATION DE CONFORMITÉ  
ERKLÄRUNG DER ÜBERSTIMMUNG  
SAMSVARSERKLØRING**

**Pullman Ermator AB  
Industrivägen 10  
S-777 34 SMEDJEBACKEN**

*Försäkrar under eget ansvar att maskinen  
Declare under our sole responsibility that the machine  
Certifie sous sapropre responsabilité que le produit ci après  
Versichern auf eigener verantwortung, dass das Produkt  
Forsikrer under eget ansvar at maskinen*

**S36 120 USA 120V    No: 0900242e0001-xxxx**

**Tillv.år/Manufact.year/Baujahr: 2013-**

*som omfattas av denna försäkring är i överensstämmelse med standarder:  
included in this declaration, follows the provisions of the:  
est conforme aux aux normes suivantes:  
den folgenden Normen entspricht:  
er i overensstemmelse med standarder:*

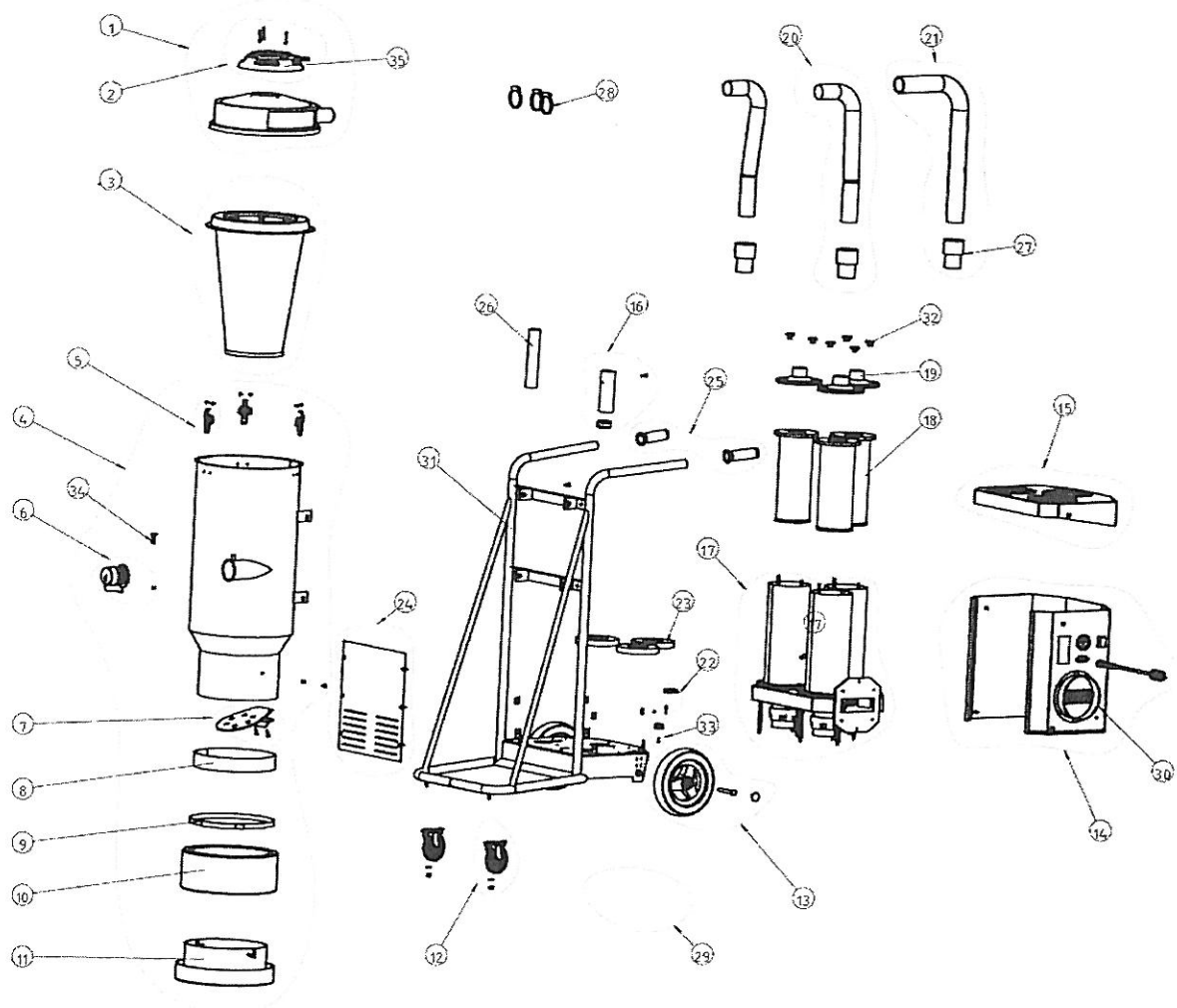
**SS-EN 60335-1: 2002+A11+A1+A12+A2+A13+A14  
SS-EN 60335-2-69:2009  
SS-EN 61000-6-3:2007  
SS-EN 61000-6-2:2005**

*enligt villkoren i/according to/selon/aut/i henhold til vilkårene i*  
**Machine Directive 2006/42/EC  
Low voltage Directive 2006/95/EC  
EMC Directive 2004/108/EC**

**SMEDJEBACKEN 2010.01.01**

**Torbjörn Bengtsson  
VD  
General Manager**

# S36 120 V



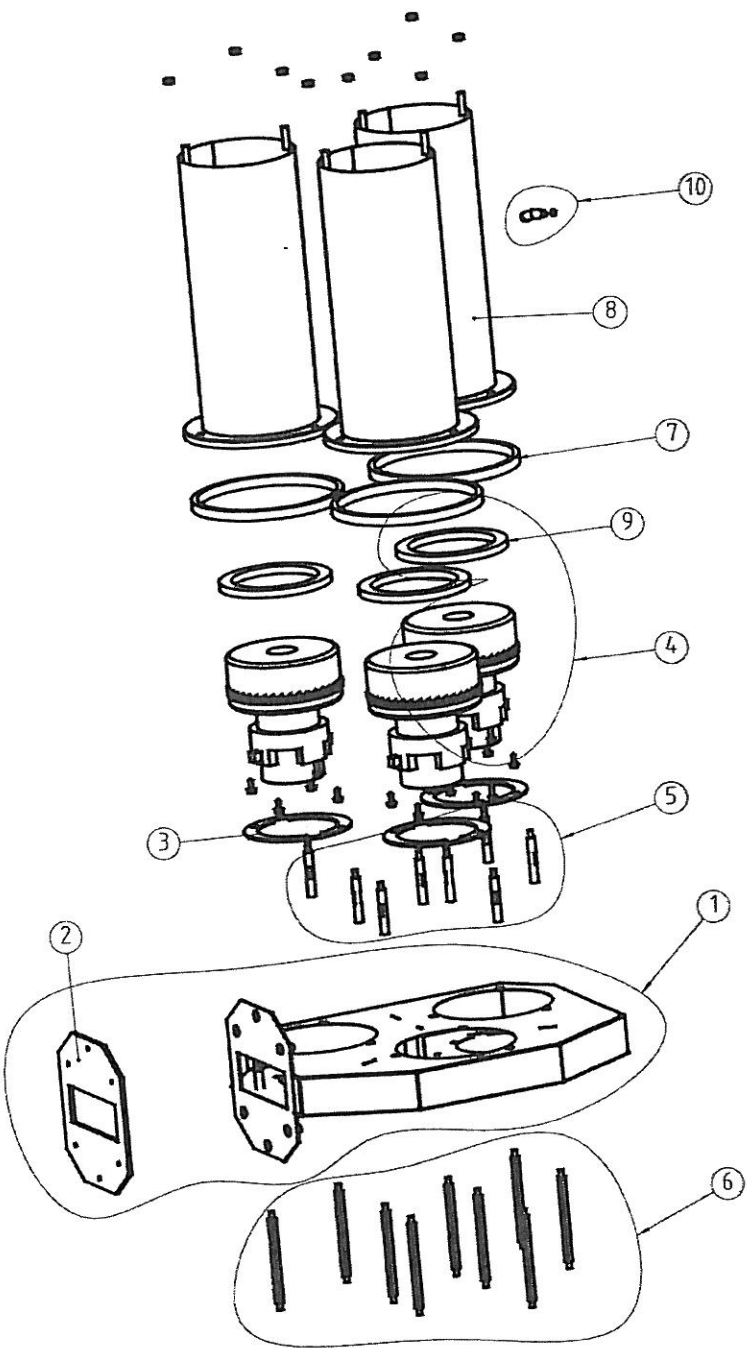
|        |            |
|--------|------------|
| Number | 200900242e |
| Model  | S36 120V   |
| Rev.   | 00         |

# S36 120 V

| POS. | QTY. | NUMBER     | DESCRIPTION                             |
|------|------|------------|---|
| 1    | 1    | 201100160  | TOP COVER PACKING (ex. S36)             |
| 2    | 1    | 201000118  | CLEAN UNIT ASSEMBLY PACKING             |
| 3    | 1    | 200900051  | FILTER                                  |
| 4    | 1    | 201000200a | TANK COMPLETE (ex. S36a)                |
| 5    | 3    | 200600799  | HOLDER KIT                              |
| 6    | 1    | 201000145  | INLET SEAL COMPLETE SET                 |
| 7    | 1    | 201000116  | FLAP KIT                                |
| 8    | 1    | 201100141  | ANTI-SKID PACKING                       |
| 9    | 1    | 201100140  | BELT PACKING                            |
| 10   | 1    | 1376013    | LONGOPAC BAG 4 PACK                     |
| 11   | 1    | 201100135  | LONGOPAC HOLDER PACKING                 |
| 12   | 1    | 200800152  | FRONT WHEEL KIT                         |
| 13   | 1    | 200800151  | REAR WHEEL KIT                          |
| 14   | 1    | 201100167e | MOTOR COVER ASSEMBLY (ex. S36 USA 120V) |
| 15   | 1    | 201000201  | TOP MOTOR COVER KIT (ex.S36)            |
| 16   | 1    | 200800153  | CLIP HOLDER KIT                         |
| 17   | 1    | 201100169e | MOTOR BOX KIT(ex.S36 USA 120V)          |
| 18   | 3    | 200700070a | HEPA-FILTER                             |
| 19   | 3    | 201000121  | FILTER COVER KIT                        |
| 20   | 2    | 201000203  | MIDDLE HOSE KIT OF S36                  |
| 21   | 1    | 201000204  | HOSE KIT OF S36                         |
| 22   | 1    | 200700531  | SOFT START 120V, KIT                    |
| 23   | 3    | 201100161  | INSULATION PACKING                      |
| 24   | 1    | 201000205  | PLATE COVER KIT OF MOTOR COVER          |
| 25   | 1    | 201000206  | HANDLE KIT PACKING                      |
| 26   | 1    | 95102      | LONGOPAC SEAL CLIPS(60 PCS)             |
| 27   | 3    | 201100125  | HOSE END (51MM) PACKING                 |
| 28   | 3    | 201100137  | HOSE CLAMP 60-65 PACKING                |
| 29   | 1    | 201000207  | SCREW AND NUT SET OF S36                |
| 30   | 1    | 201000208  | 160MM EXHAUST AIR OUTLET PACKING        |
| 31   | 1    | 201000209  | WAGON ASSEMBLY                          |
| 32   | 6    | 201100128  | KUNRLED THUMB NUT                       |
| 33   | 1    | 201000210  | CONNECTION BRIDGE KIT                   |
| 34   | 1    | 201100139  | LOCKING DEVICE PACKING                  |
| 35   | 1    | 201000670  | TOP COVER KIT ex. CLEAN UNIT            |

|        |            |
|--------|------------|
| Number | 200900242e |
| Model  | S36 120V   |
| Rev.   | 00         |

# MOTOR BOX 120 V



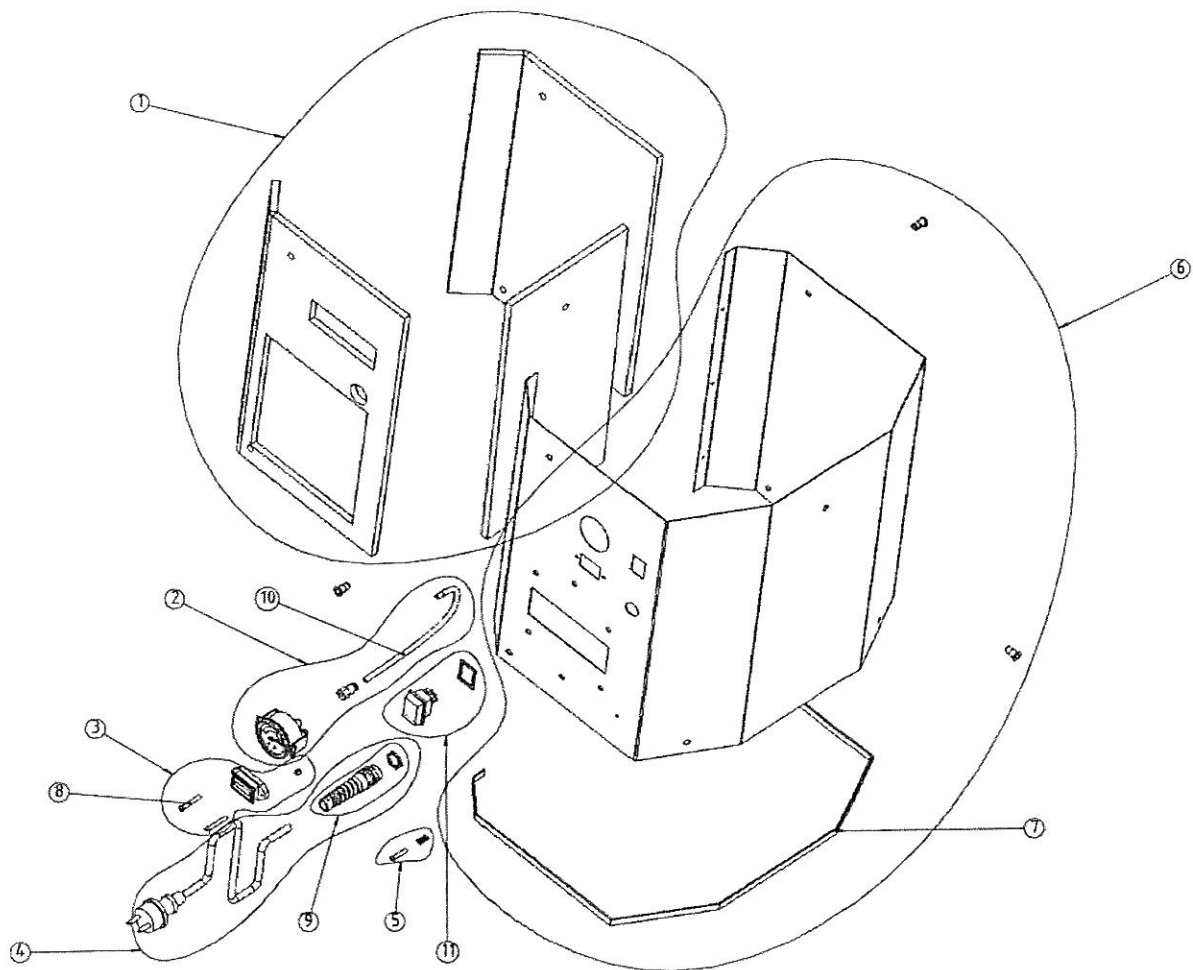
|        |                                |
|--------|--------------------------------|
| Number | 201100169e                     |
| Model  | MOTOR BOX KIT(ex.S36 USA 120V) |
| Rev.   | 00                             |

# MOTOR BOX 120 V

| POS. | QTY. | NUMBER     | DESCRIPTION                     |
|------|------|------------|---------------------------------|
| 1    | 1    | 201100171  | MOTOR BOX (ex. S36)             |
| 2    | 1    | 201100172  | SEALING 160 mm OUTLET           |
| 3    | 1    | 201100173  | SEALING PACKING                 |
| 4    | 3    | 200800060e | MOTOR 120V 800W KIT             |
| 5    | 1    | 201100174  | UPPER SUPPORT PIN KIT (ex. S36) |
| 6    | 1    | 201100175  | LOWER SUPPORT PIN KIT (ex. S36) |
| 7    | 1    | 201100170  | TOP MOTOR SEALING               |
| 8    | 3    | 201100176  | FILTER HOUSING                  |
| 9    | 1    | 201100177  | MOTOR SEALING KIT               |
| 10   | 1    | 201000178  | NIPPLE ANGLE KIT                |

|        |                                |
|--------|--------------------------------|
| Number | 201100169e                     |
| Model  | MOTOR BOX KIT(ex.S36 USA 120V) |
| Rev.   | 00                             |

# MOTOR COVER 120 V



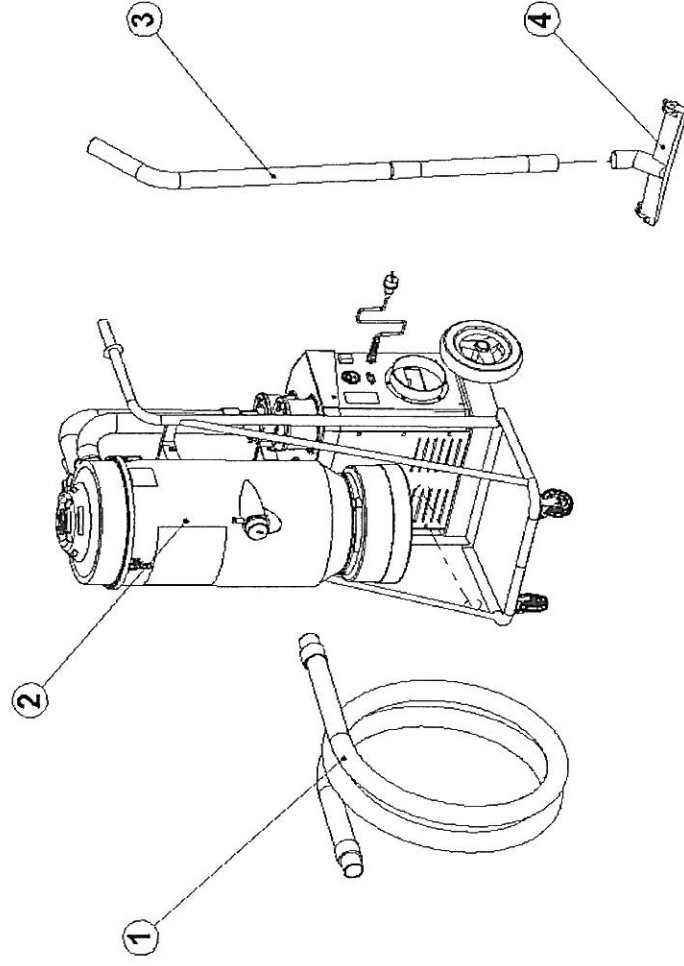
|        |   |
|--------|---|
| Number | 201100167e                              |
| Model  | MOTOR COVER ASSEMBLY (ex. S36 USA 120V) |
| Rev.   | 00                                      |

# MOTOR COVER 120 V

| POS. | QTY. | NUMBER    | DESCRIPTION          |
|------|------|-----------|----------------------|
| 1    | 1    | 201100165 | AC FOAM PACKING      |
| 2    | 1    | 200700413 | MANOMETER KIT        |
| 3    | 1    | 201000133 | COUNTER SET          |
| 4    | 1    | 201100149 | CORD SET PACKING     |
| 5    | 1    | 201000211 | GROUNDING SCREW KIT  |
| 6    | 1    | 201000212 | MOTOR COVER          |
| 7    | 1    | 201100163 | SEALING PACKING      |
| 8    | 2    | 201000213 | SCREW SET OF COUNTER |
| 9    | 1    | 201100150 | CABLE FIX KIT (PG13) |
| 10   | 1    | 201100164 | HOSE PACKING         |
| 11   | 1    | 201100151 | SWITCH PACKING       |

|        |   |
|--------|---|
| Number | 201100167e                              |
| Model  | MOTOR COVER ASSEMBLY (ex. S36 USA 120V) |
| Rev.   | 01                                      |

# ACCESSORIES 36 120 V



| POS. | QTY | NUMBER    | DESCRIPTION                     |
|------|-----|-----------|---------------------------------|
| 1    | 1   | 201000128 | HOSE 63mm x 10m (ex. S36)       |
| (1)  | 1   | 201000061 | HOSE 51mm x 7,5m (ex. S26)      |
| 2    | 1   | N/A       |                                 |
| 3    | 1   | 1224035   | 50S Steel tube Kit (2pc) dia 50 |
| 4    | 1   | 1326087   | S450 Floor Tool 50mm x 450mm    |





## Notes

---

---

---

---

---

---

---

---

---

---

---

---



***Ermator***