

PULLMAN-HOLT



Survivor Series HEPA Vacs

Model 102ASB12PD

Number one choice of abatement professionals

The 102ASB is a proven performer in the abatement industry. For over twenty years, it has earned the reputation as a true “work horse” by abatement, remediation and restoration professionals. A heavy-duty polyethylene tank with dump valve, rugged construction and long-life, commercial grade vacuum motor help make this model the toughest, most durable HEPA Vacuum in the market today.

Powerful Vacuum

A 2 Horsepower, 2 stage by-pass, 11.1 amp motor delivers 105” of water-lift and 110 CFM. Plenty of power for fast pick-up of wet and dry hazardous materials.

True 99.97% Type A Large Capacity HEPA Filter

Individually tested and certified to have a minimum efficiency of 99.97% at .3 microns in accordance with IEST-RP-CC001 test requirements.

Pullman-Holt HEPA Filter System

Air Seal Gasket – Provides tight air seal and prevents leakage.

HEPA Media – The filter is made from a single piece of high-grade HEPA media to eliminate the possibility of leaks. The pleats in the media are held open by corrugated aluminum separators for maximum airflow.

Spacer Sleeve – The purpose of the spacer sleeve is to space the Dacron bag away from the HEPA filter body so as to utilize the full area of the “Never Clog” Dacron bag.

Polyester Prefilter – This impact filter is about one inch thick and is attached to the inlet (bottom) surface of each HEPA filter. Its function is to provide final protection to the HEPA filter from premature failure due to clogging.

“Never Clog” Filter Bag – Sheds dirt and debris like a duck sheds water. Shakes clean to maintain maximum airflow.



PULLMAN-HOLT

10702 N. 46th St. • Tampa, FL 33617
800-237-7582 • Fax 800-833-8875
www.Pullman-Holt.com

PULLMAN-HOLT

Survivor Series HEPA Vacs

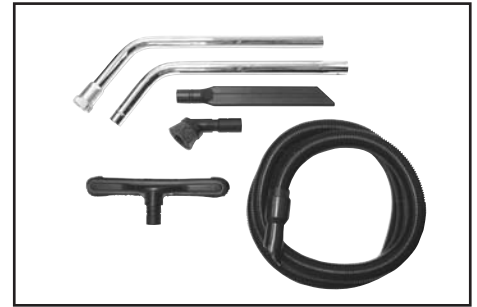
Model 102ASB12P



Specifications:

Product Code:	B527038
Style:	Dry
Horsepower:	2
Waterlift:	105"
CFM:	110
Tank capacity:	12 Gal.
Recoverable capacity:	1.75 bushel
Cord length:	25 feet
Shipping weight:	84 lbs.
Motor warranty:	1 year

Meets & exceeds EPA & OSHA standards



Included Attachments & Accessories:

Tool Kit (B160450)

- 5' two-piece metal wand (B521007)
- 10' X 1.5" crushproof hose (B000311)
- 14" floor brush tool (B527095)
- 17" crevice tool (B701615)
- 3" round dusting tool (B000394)

Replacement Filters

- Polyester prefilter 1 each (B700017)
- Disposable paper filter bags 1 each (B524253)

Disposable Poly Bags

- 1 each (B524263)

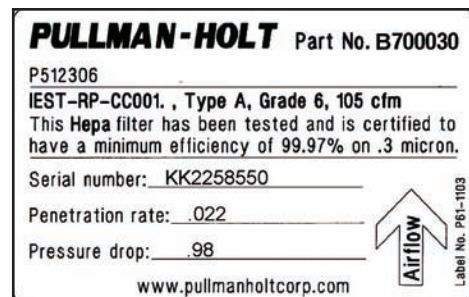
Features:



Complete HEPA Filter Assembly consisting of air seal gasket, polyester prefilter, spacer sleeve and Dacron filter bag (B160009)



High efficiency 2-ply enclosed, disposable paper filter bag acts as the primary filter to trap and hold dry material for easy handling and disposal. (B524253)



Each Pullman-Holt HEPA filter is tested and certified to provide a minimum efficiency of 99.97% at .3 microns. based on IEST-RP-CC001 test requirements.



PULLMAN-HOLT

10702 N. 46th Street • Tampa, FL 33617
800-237-7582 • Fax 800-833-8875
www.Pullman-Holt.com